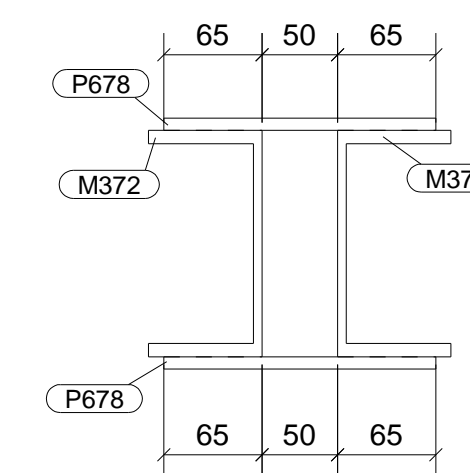
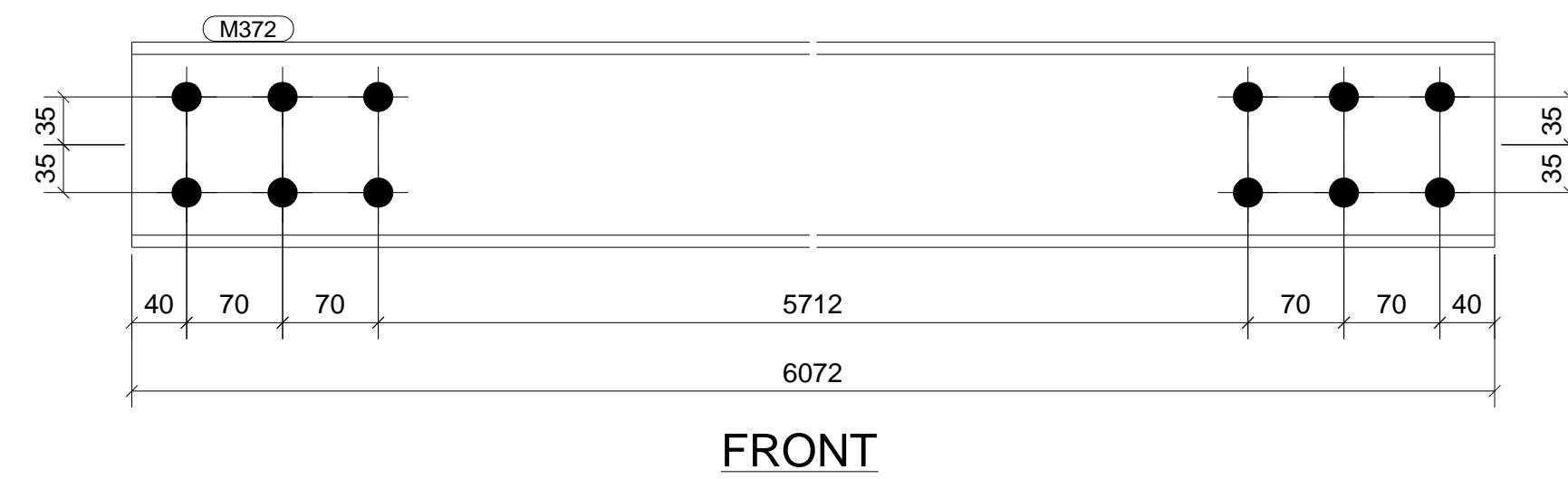
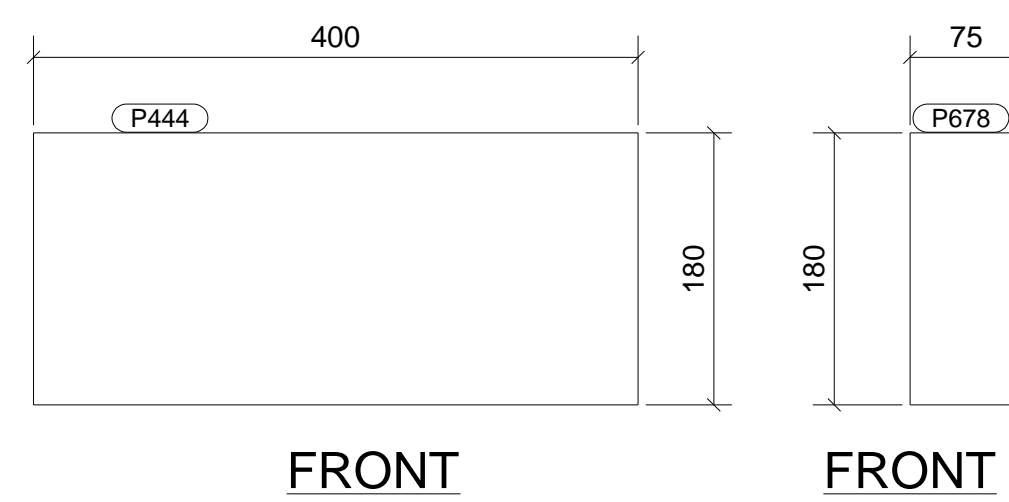
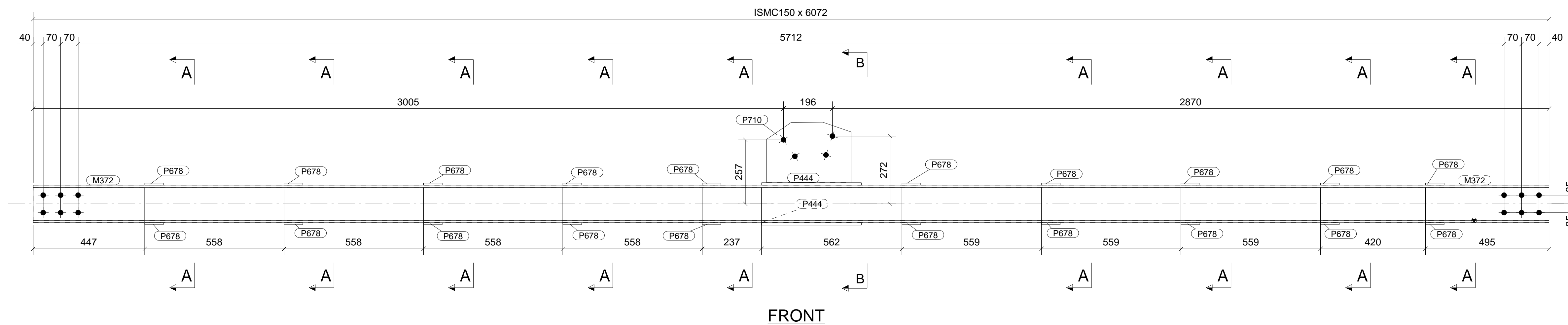
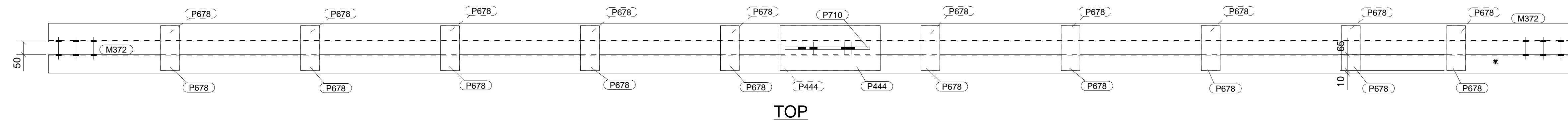


GENERAL NOTES: ALL HOLES ARE 21.5 DIA. UNLESS NOTED
ALL WELDS ARE 6mm F.W UNLESS NOTED

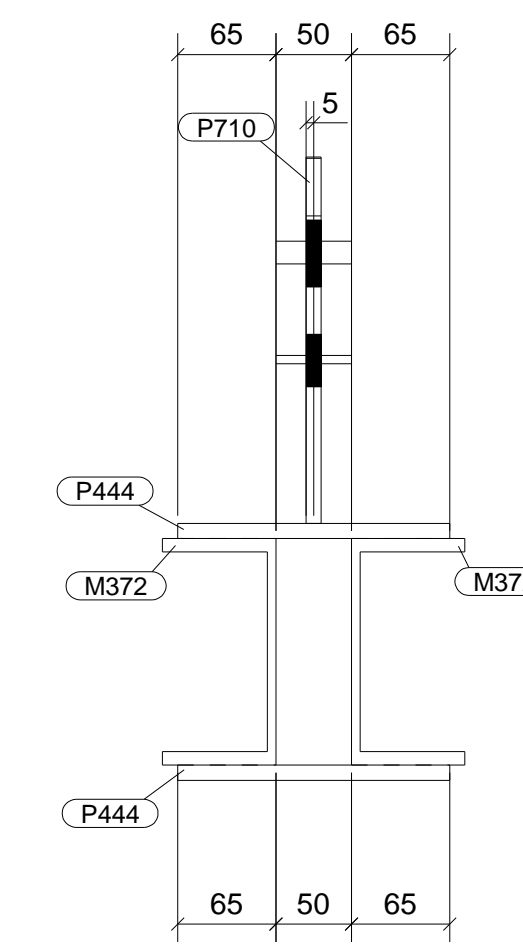
MATERIAL LIST FOR ONE ASSEMBLY MK'D		RMD-BR835		1		No. Required
Mark	Size	No.	Length	Weight/Memb		Weight
M372	ISM C150	2	6072	101.5		203.04
P444	PLT10*180	2	400	5.7		11.30
P678	PLT8*75	20	180	0.8		16.96
P710	PLT10*242	1	339	6.0		5.99
Total						237.3

BOLT LIST FOR ASSEMBLY : RMD-BR835 1 No. Req'd.

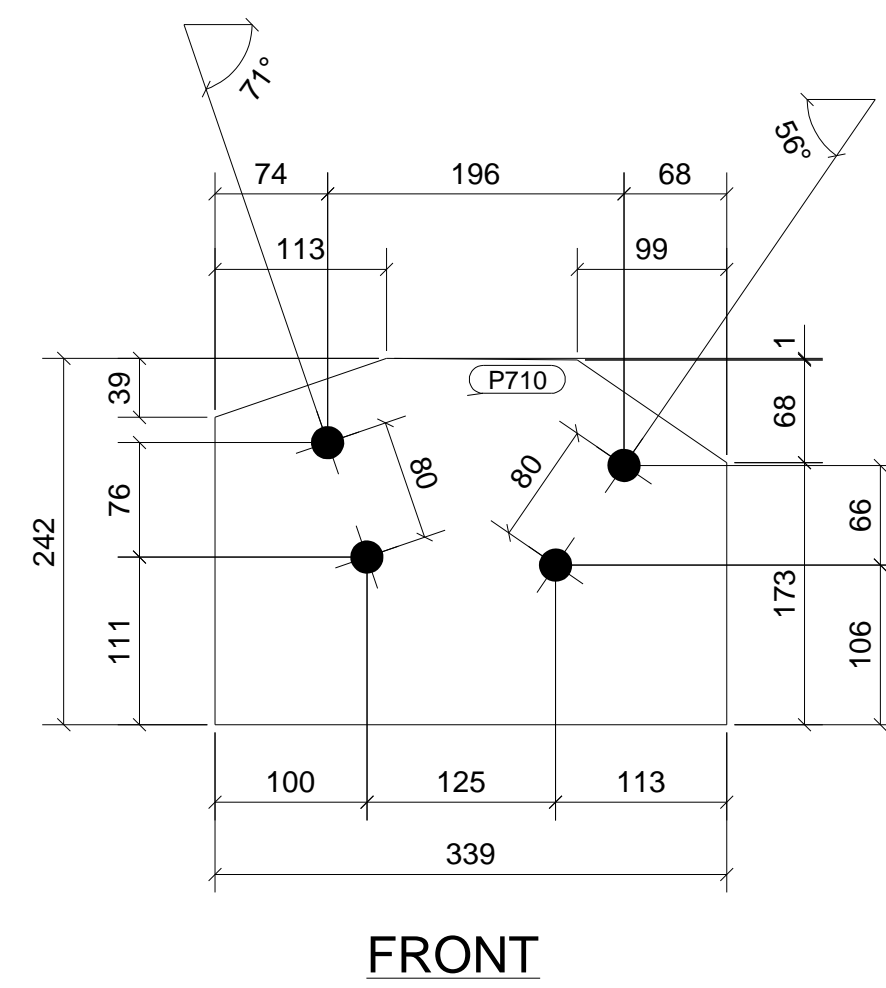
Diam	Length	No	Connected Assemblies
20	90	6	RMD-B300 RMD-B300 RMD-B300 RMD-BR83



SECTION A



SECTION B



FRONT

- NOTES :**
1. ALL DIMENSIONS ARE IN MILLIMETRES AND LEVELS ARE IN METERS U.N.O.
 2. ALL WELDS 6 MM CONTINUOUS FILLET WELDS U.N.O.
 3. ALL HOLES ARE 22 DIA (U.N.O.)
 4. FOR GENERAL NOTES & SPECIFICATION REF. DWG. NO. 1-GEN-G-01
 5. FOR ERECTION MARKING REFER DRG.NO D08C12-RMB-X-51 TO 56

REV.	DATE	DESCRIPTION	MADE	CHECK	APPR.
ISSUED FOR FABRICATION					
REVISION					
RAW MILL BUILDING AND DUCT SUPPORTS : RAW MILL FAN INLET AND OUTLET DUCT SUPPORT TOWER FROM 15.200M TO 74.500M LVL : FABRICATION DETAILS OF ASSEMBLY : RMD-BR835					
JOB NO.:	DESIGN:	MADE:	DATE:	DWG. NO.:	REV.:
	CHECK:	APPR.:	REV.:	RMD-BR835	A